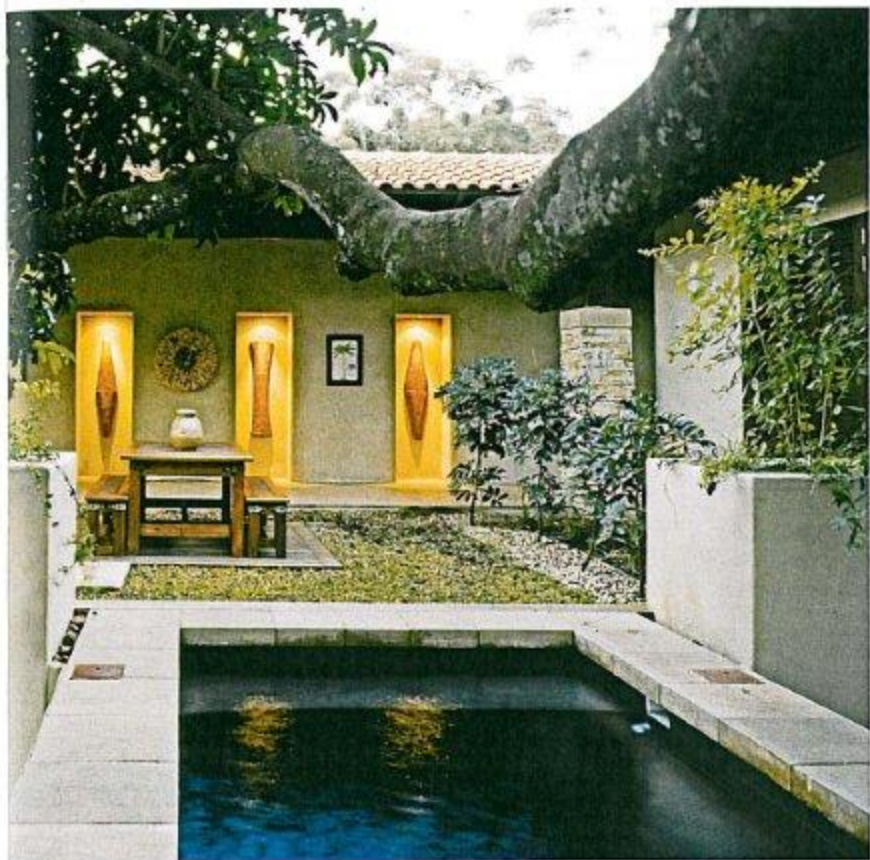


habitat

THE ART OF LIVING



Co-published by Habitat 67
No. 102 \$3.95
0892-6666 (US) Email: h67@habitat.com
1 877-737-7373



COASTAL MAGIC

location: Zimbal, KZN North Coast
architects: Kevin Lloyd Architects
interior design: M&M Designs
landscaping: Mike Rocher

THE YOUNG SA-BORN OWNERS WERE LIVING IN OXFORD, UK WHERE THEY WERE INVOLVED IN PROPERTY RENOVATION AND DEVELOPMENT. THEY PLANNED TO RETURN TO SOUTH AFRICA, BUT FIRST WANTED TO SOURCE AND COMPLETE A NEW HOME. FALLING IN LOVE WITH THE ZIMBALI COASTAL RESORT - FOR ITS TRANQUILITY AND LUSH VEGETATION - THEY ALSO RECOGNIZED THE DEVELOPERS COMMITMENT TO QUALITY IN BOTH ARCHITECTURE AND LANDSCAPING.



These spaces, exotic vegetation and spectacular trees form a backdrop to innovative architecture and detailed decoration. The result is a sense of permanence and establishment unusual in a new home. Elements include rustic timber pieces, dramatic ceramics and rich textures.



Their experience in the industry in the UK produced a sharing of knowledge which was to enrich the project. Their prerequisites defined the need for a more contemporary home within the Balinese inspired architectural guidelines and a vernacular that would give the structure a sense of place. Strongly inspired by natural textures and materials, they wanted to take advantage of the climate and enjoy living outdoors. Their instinctive understanding of architecture and finishes resulted in a house anchored to the landscape.

With the clients living out of SA a full professional team was assembled. This included: land surveyor, geotechnical engineer, structural engineer, quantity surveyor, architect, landscape designer and interior designer. The site is located in a cul-de-sac in the Thulabai area of the Zimballi Coastal Resort, on a steep fall of land facing the Golf Course, with distant views through tropical indigenous vegetation to the ocean beyond.



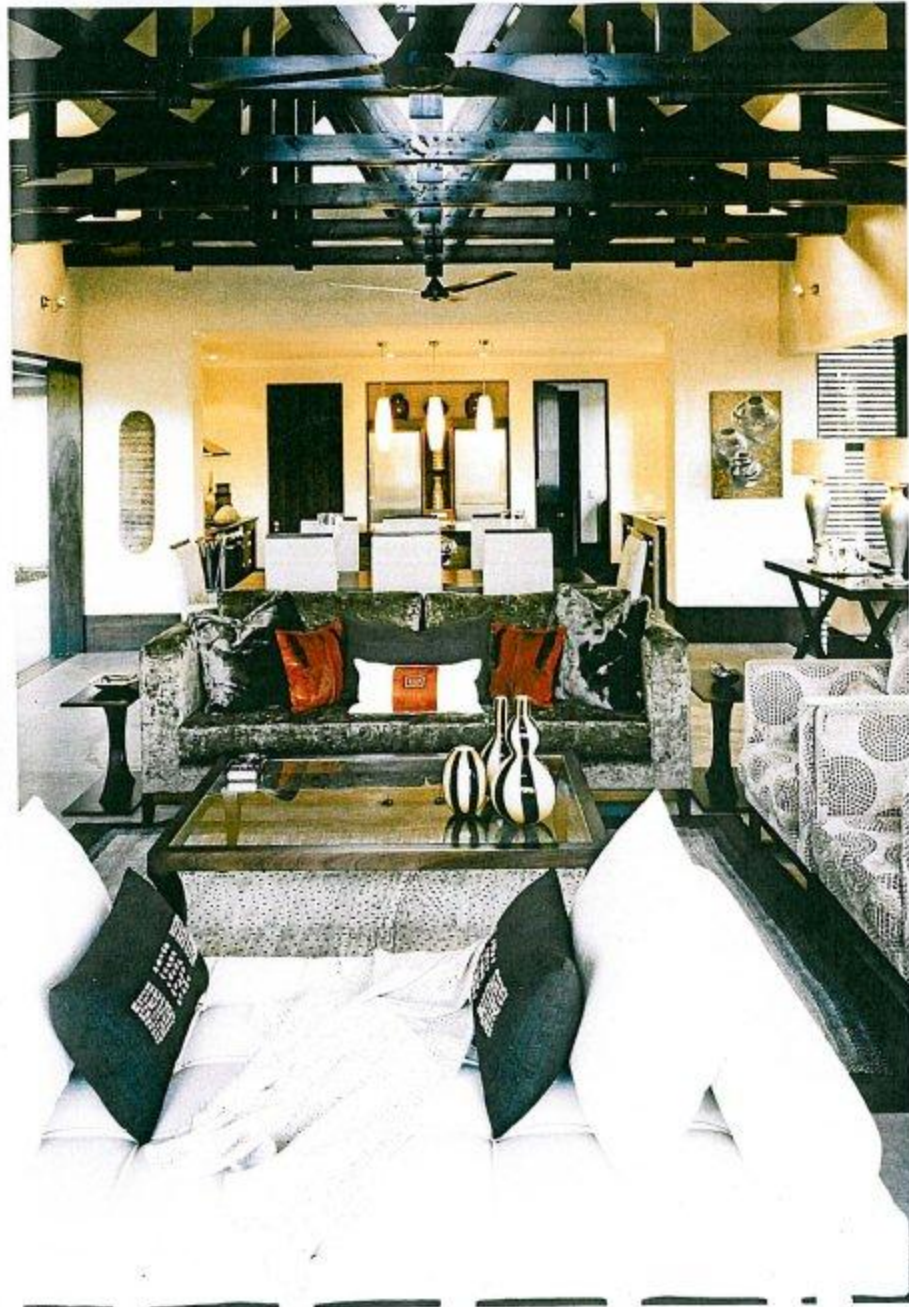


These pages: Decor is evocative of Balinese design which is a theme Zimbali has embraced as an entire region. Colours are varied but the pieces and accessories used are largely simplistic. Symmetry is key and interior spaces are used to the full in being multi-purpose with the easy access to living areas.



The site was surveyed to pick up contours, features, and existing trees; these included large mature indigenous trees at the entrance to the property, with a number of flatcrowns (*Albizia Adianthifolia*) scattered across the remainder. Accommodation guidelines were established to suit a young family, with space for guests separated from the family areas for reasons of privacy.

Say the architects: There was strong emphasis on taking advantage of the tropical climate and living outdoors. The brief for a contemporary design – within the Balinese inspired architectural guidelines – led to initial discussions on appealing materials and forms, as well as textures, and design inspiration was drawn from the site and the vegetation. As we progressed, the perspectives and floor plan evolved almost unchanged from the preliminary sketch designs presented to the owners.





These spaces, Natural materials take precedence throughout and their inclusion reinforces the close association with the exterior. Practical yet aesthetically appealing, this is a synergy of architecture and interior design.



'It was decided to allow the design to retain conceptual strength with minimal compromise and there was considerable input from the owners and ourselves – in a collaborative approach to the design detailing – during final completion stages.'

The driveway meanders through the large trees at the entrance, which create shade and give privacy to the home. The team managed to retain all the trees on the site so that the structure and its outdoor living areas participate in the lush coastal vegetation. Simple, articulated forms and natural materials create a clarity of spaces, which include a strongly defined courtyard area opening outwards to embrace the vegetation and climate. Vistas extend to the golf course, through the light leafy canopies of the ficus trees while the swimming pool extends to the canopy of a large mahogany tree. The result is an added intensity in the outdoor living experience.

The architects adds: 'There is a defined vernacular here and an emphasis on design detailing and varying textures. It's a very personal home, very much at one with the habitat in which it stands.'

Comment from the Interior designer:

This home never allows you to forget the natural beauty that surrounds it. Natural textures and tones form the essence within, yet everything about this structure and its interior is tactile. It's a blend of contemporary sophistication and subtle colour, which benefits from the ever changing light in the day-light hours. Living here is a sensory experience of dappled light cascading through the detail of the double volume stairwell; it's almost as though the tranquility of the indigenous forest streams into the interior.' □

