

TOP BILLING

THE BEST OF THE GOOD LIFE

BEST BEACH HOUSES
Cool and trendy in Giffon
Pezula built parades
Exotic glamour in Hermanus
Industrial chic Durban pad

A COTTAGE GARDEN
Fragrant herbs
& secret spaces

LAI-D-BACK LOUROS
Tasty island times
in unspoilt Greece

FUSS-FREE FEASTS
Turkey on the braai
The greatest cake
Scrumptious gifts

YOU CAN DO IT
Revive a boring patio
Make a four poster bed
A Christmas tree to keep

THE FAMILY ISSUE

DISCOVER THE
BEST OF THE
BEST

WIN

A luxury stay at Pappard river Lodge worth R35 000
A road trip through the Cape worth R26 000
A stylish lounge and digital camera worth R25 000

0947 860 000

decor

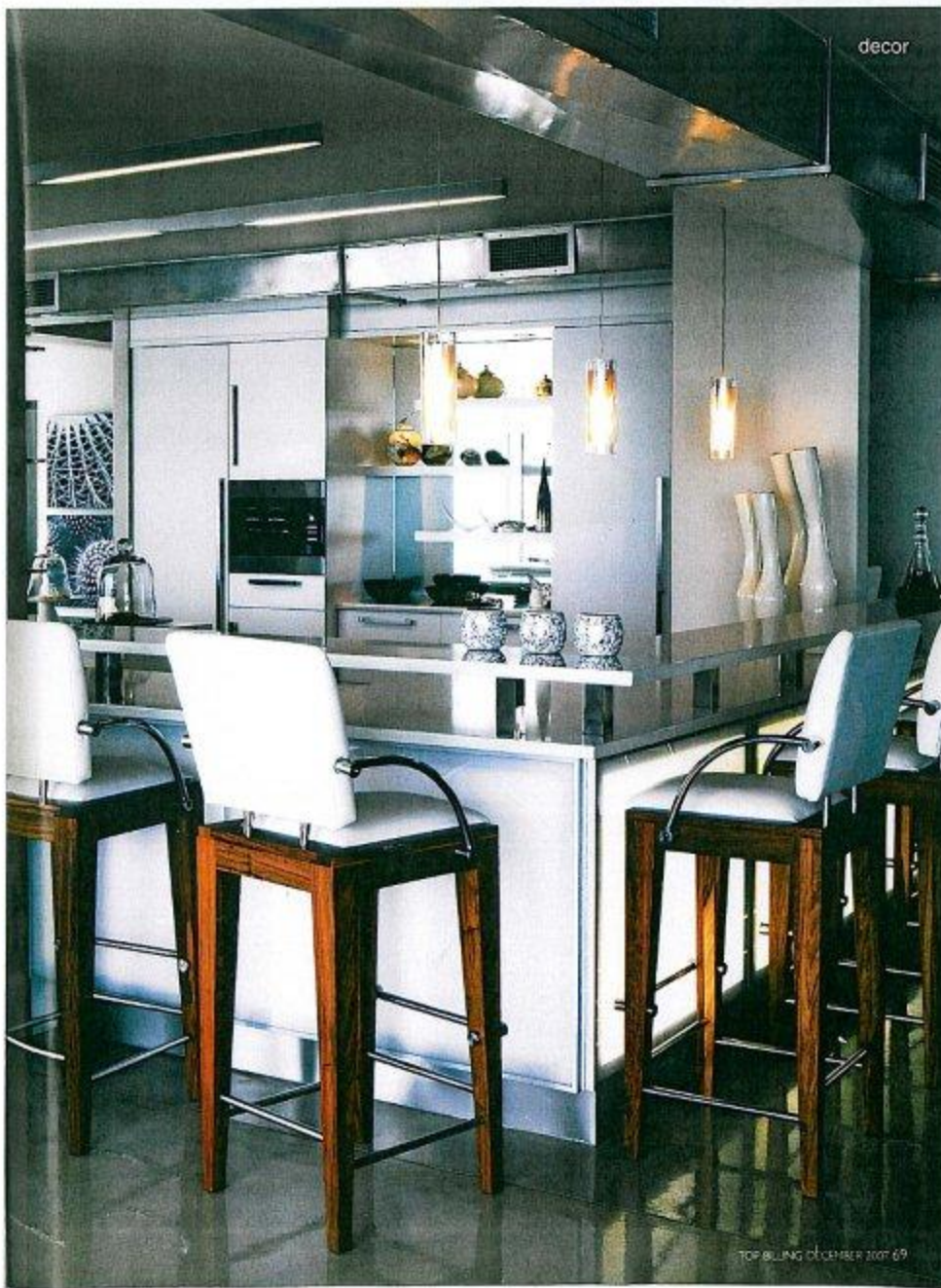
The living area extends to a large wrap-around balcony with a breathtaking ocean view. The clean lines of the Maldene Martin dining table and chairs complement Bright Blue Designs' contemporary landscaping on the balcony.

Ocean blues

Soft blue hues and silver accents pay tribute to the never-ending Indian Ocean view from a busy family's Umhlanga Rocks holiday pad

Decor editor Marian van Wye Assisted: Megan Stopporth
Photographs: Angie Lizaro





decor

TOP BILLING DECEMBER 2007 69

Industrial style is not an obvious choice for a family beach holiday pad, yet when you step into this apartment all you want to do is kick your shoes off, put your feet up and enjoy the view. At 270 degrees of it.

Set on the Umhlanga Rocks beachfront, the apartment is the weekend getaway and holiday home of a busy Gauteng family. With three adult children, a large extended family and a busy social life, the creative husband-and-wife team wanted a low-maintenance lock-up-and-go pad but with room to breathe. The apartment's generous proportions – the interior is 800m² and the wrap-around balcony is 600m² – suited their needs perfectly.

Although they could hardly wait to enjoy their new space, the builders had to move in first: several interior walls were demolished and all the dated finishes were removed until the apartment was stripped down to a blank canvas for Durban interior designer Michelle Metzger from M&M Designs.

The clients' brief came as a pleasant surprise to Michelle. 'Their home in Gauteng is very traditional, in fact, the complete opposite of their holiday apartment. Here they wanted an uncluttered, contemporary interior in an understated style.'

The large, open-plan interior lends itself to an industrial feel, to which Michelle applied a soft, almost feminine edge by adding muted water colours.

'I did not want to work with the traditional bright blues that you would normally see in a beach house. Instead I selected soft grey and silver tones and duck-egg hues.' Her water-inspired palette brings a sense of tranquility to the interior, an ambience that filters through to the balcony. Here Durban landscaper Ashleigh Tiddy from Bright Blue Designs had to work her charm to transform a bare concrete surface into a contemporary outdoor chill space.

During the design process Ashleigh had to overcome a few challenges: the balcony could not carry the weight of several plants and concrete or stone pavers; the harsh coastal climate limited her choice of plants and the landscaping had to be low maintenance.

Ashleigh overcame the structural challenges with innovative design solutions. Instead of using traditional concrete or stone pavers, she had lightweight fibreglass pavers and plant pots made. Indigenous plants like sansivarias and aloes offered a solution to the environmental and maintenance challenges. 'These plants can survive the harsh sun and wind of the coastal environment, and they only require an occasional sprinkle of water,' Ashleigh explains.

Batu decking adds texture to the balcony – a relaxed space where the family can unwind and forget about the rest of the world.

And who needs the rest of the world if you can spend your days listening to seagulls, admiring an endless sea view and feeling the cool ocean breeze on your skin?



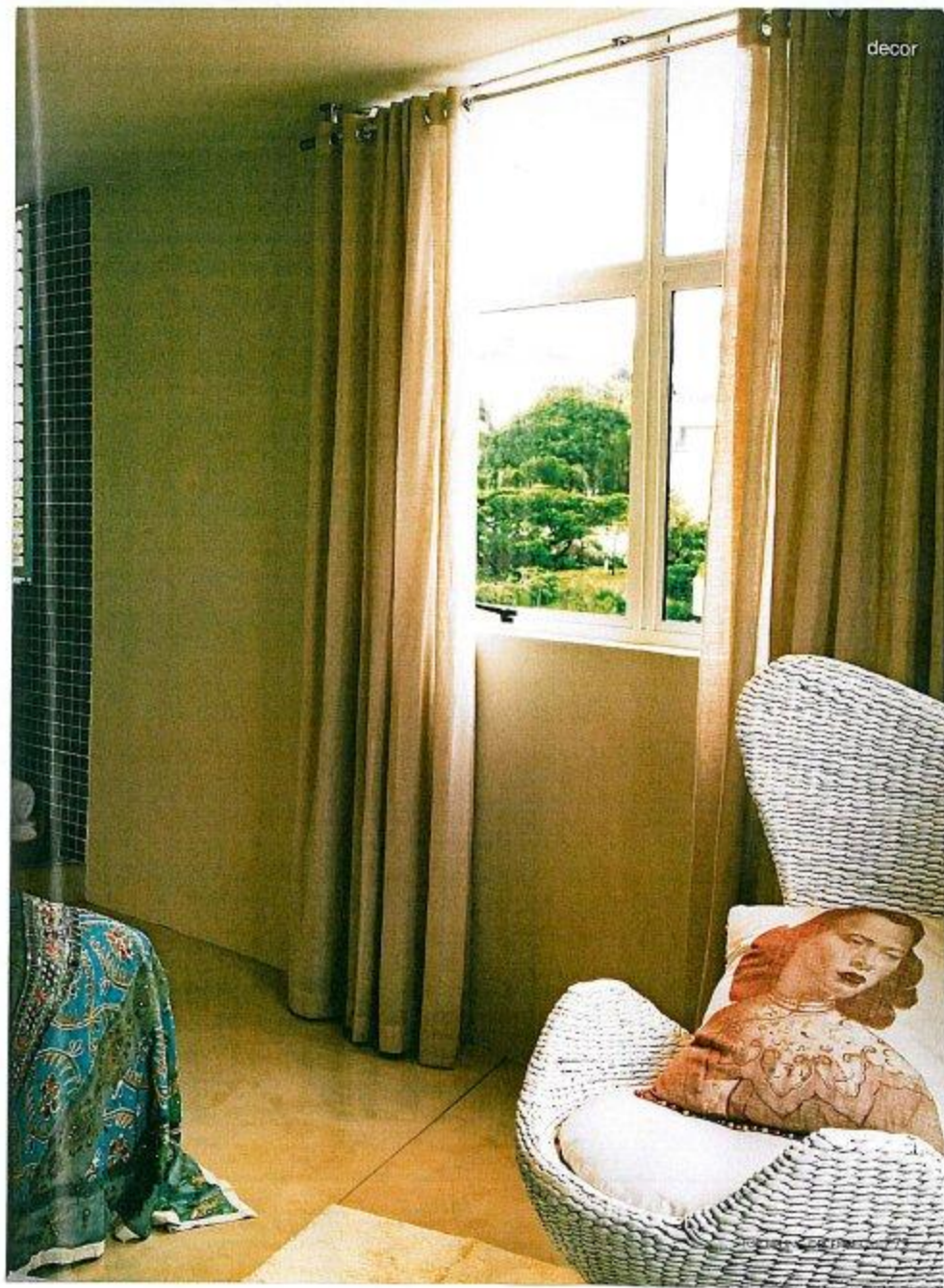
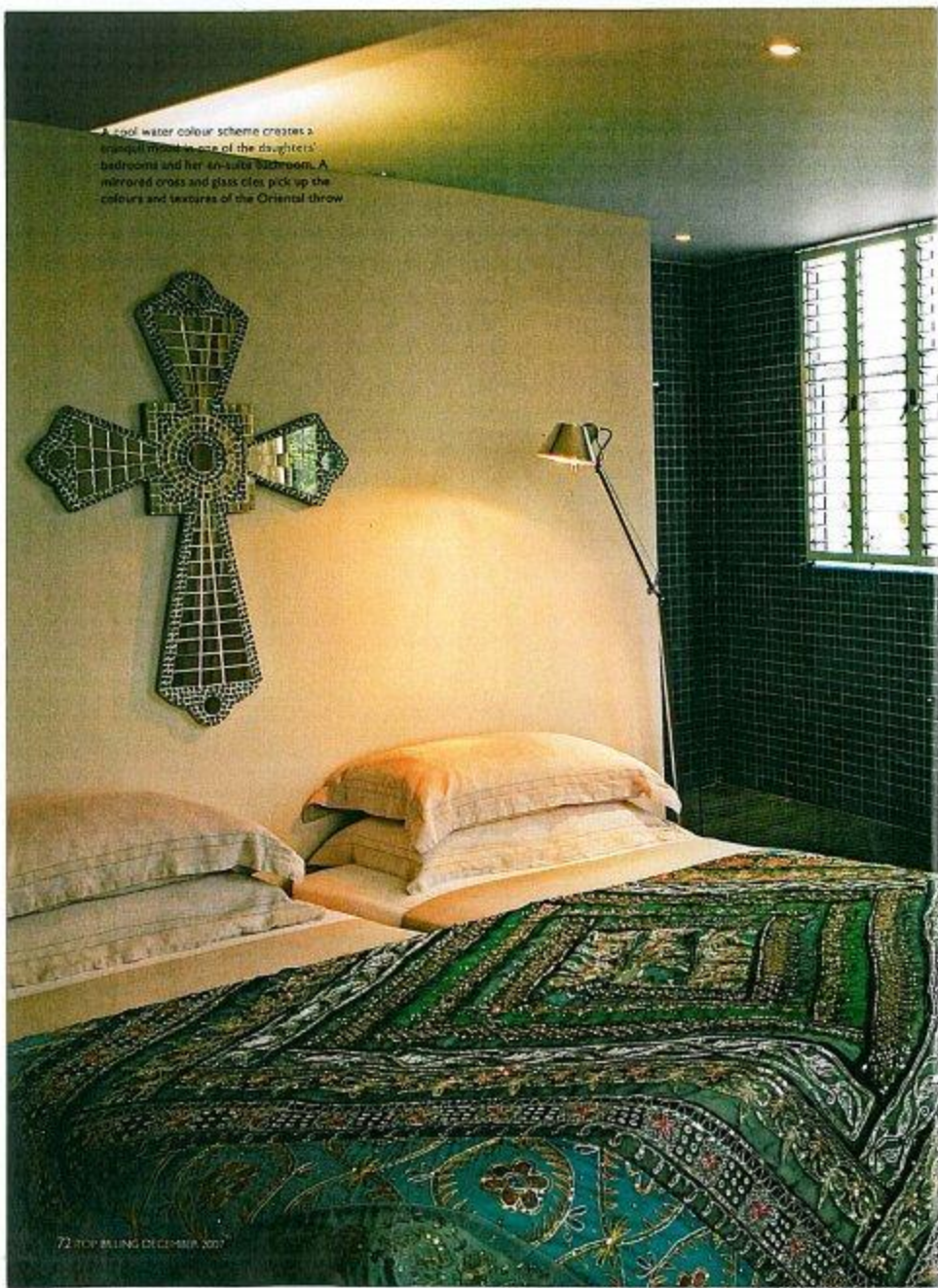
Above
In the kitchen a well-positioned mirror reflects the ocean views behind floating shelves.

Right
A soft glow from unspotted light sources, like the kitchen counter, creates an intimate atmosphere at night. The air-conditioning system is housed in stainless-steel-ribbed casings, adding to the industrial feel of the interior.



The open-plan living area consists of several relaxation areas that buzz with activity and animated conversation when family and friends get together.

A cool water colour scheme creates a tranquil retreat for one of the daughters' bedrooms and her 4½-bath bathroom. A mirrored cross and glass tiles pick up the colours and textures of the Oriental throw



The watery qualities of glass are accentuated in the sliding doors that are suspended from a steel track. The earthy texture of a chunky wool rug contrasts strikingly with the glassy concrete floor.

